

Instructions for Firmware Update

1. Hardware and Software required:

1.1 A personal computer or laptop with operation system Windows 2000, windows XP, or Windows Vista.

1.2 USB via 232 (PL-2303) USB cable with Converter.



1.3 USB via 232 (PL-2303) Driver

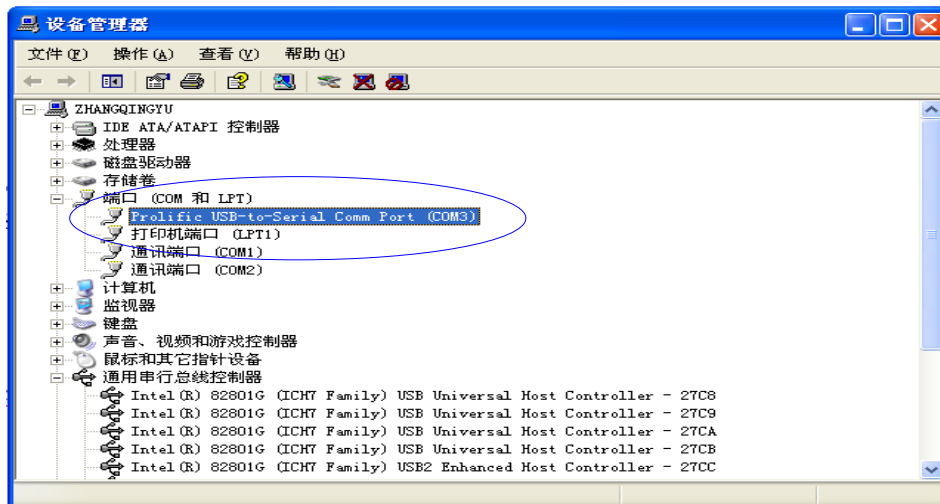
1.4 Updated Firmware (for example GT30-V1.32-N.exe)

2. Connect the USB Cable and converter to PC.



3. Install USB via 232 (PL-2303) Driver

4. Get COM Port after from Device Manager. (In this example, it is COM3)



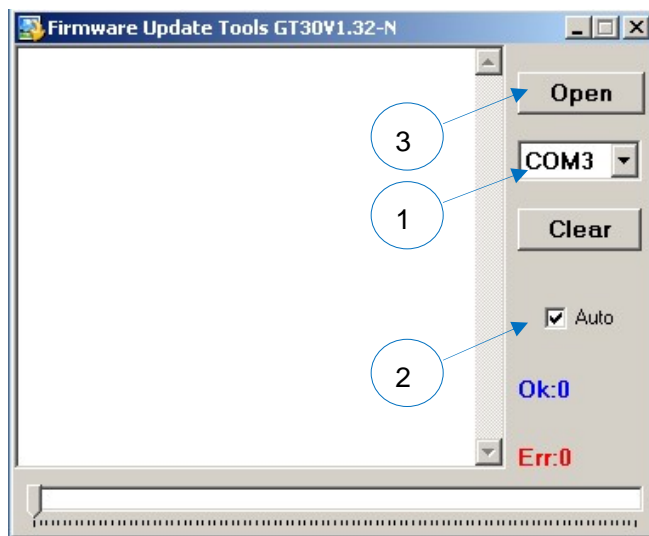
5. Open the updated firmware (for example: GT30-V1.32-N.exe) and then select the correct COM Port (the USB port as shown above, it may be com3 com4 com7, etc.).

Tick 'Auto'

Click 'Open' button.

The updating steps are as below: 1->2->3

(‘Clear’ is to clear all the contents in the window)



6. Turn off the tracker and then connect the tracker (it is GT30 in this example) to the USB cable.

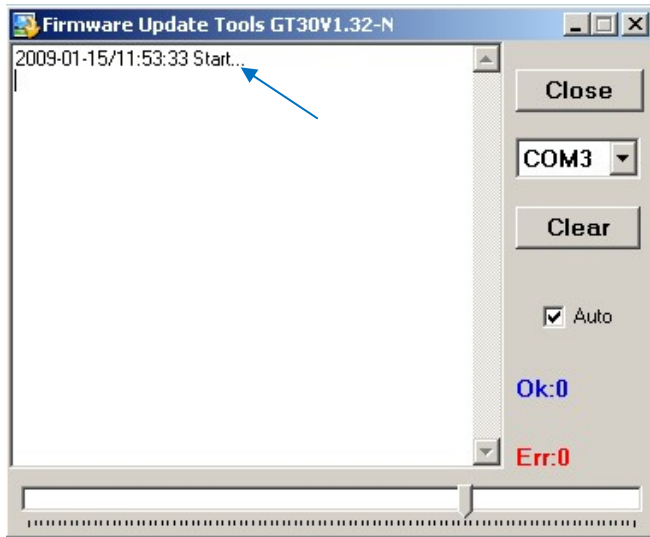


7. Press and hold the “SOS” button and then turn on the device. At this moment, the three LEDs (Three LEDs for GT30/GT60, two for VT310 and one for VT300) will be on simultaneously.

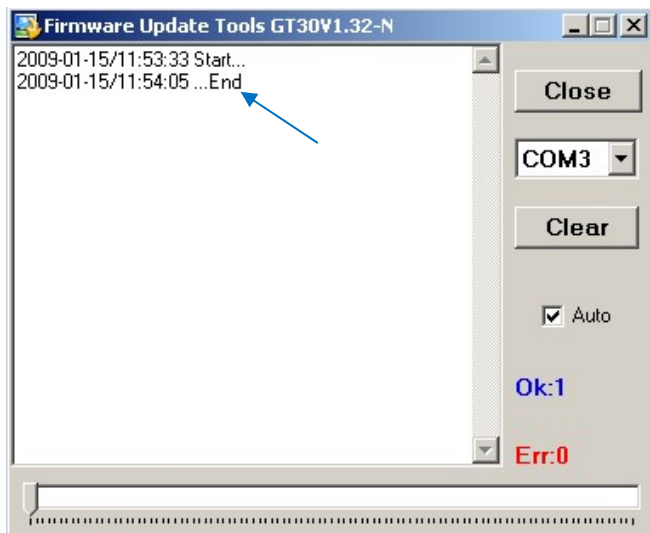


(If any LED is not on, please redo the Step 6 &7.)

8. Update Starts



9. Update Completed.



(If you failed to do the update, please redo the step 6 & 7 & 8.)

10. Insert the SIM card and restart the tracker.

