

## GPS Tracker Parameter Editor V1.29

### 1. Introduction

This GPS Tracker Parameter Editor is used for configuration on our GPS Trackers (GT30, GT60, VT300, and VT310).

### 2. Hardware and Software Required

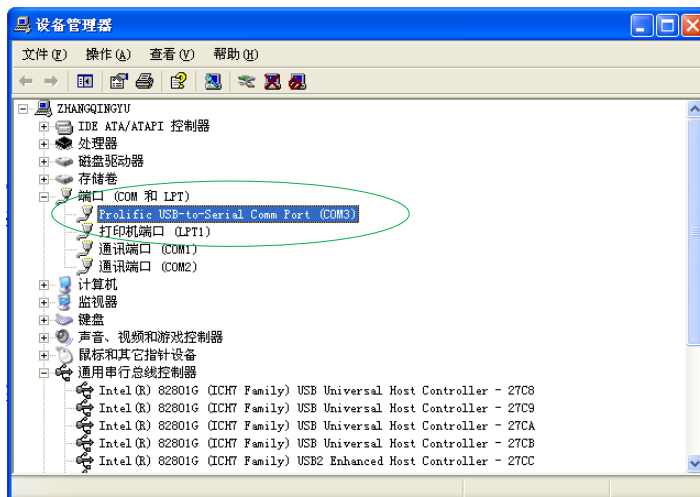
- (1) A personal computer or laptop with operation system Windows 2000, Windows XP, or Windows Vista.
- (2) One USB cable and one USB to serial converter supplied by us.



- (3) Driver PL-2303 for USB to serial converter.
- (4) Configuration tool 'ParaList V1.29'.

### 3. Installation and Connection

- (1) Run PL-2303 Driver Installer to install the driver for the USB converter.
- (2) Connect the USB cable and converter with your computer and then open Device Manager. You can then find 'Prolific USB-to-Serial Comm Port' as the following picture shows.



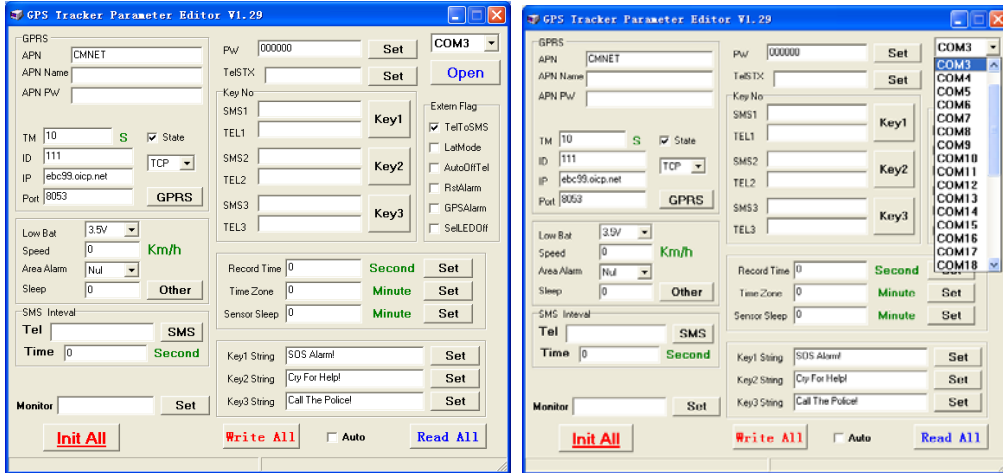
(Note: In this example, the USB port is virtual comm Port (COM3) )

### 4. Configuration on Trackers

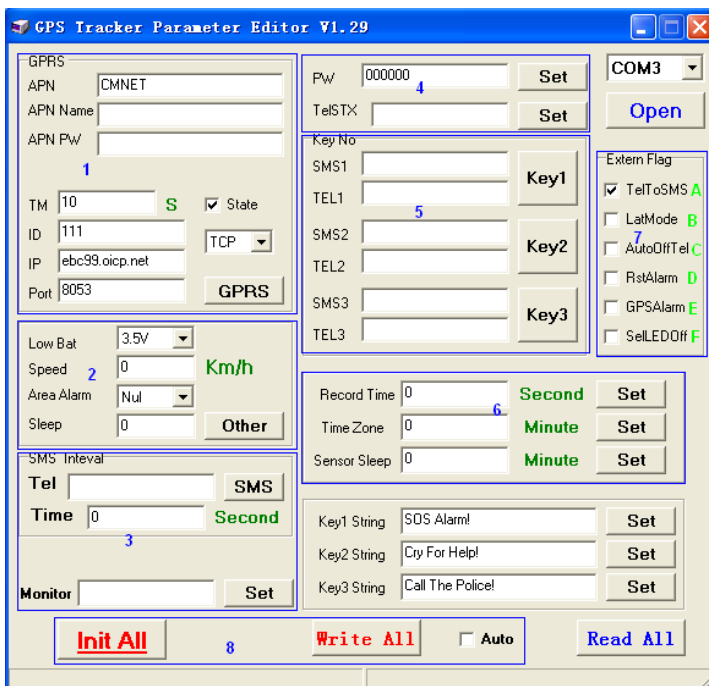
- (1) Connect the tracker (GT30, GT60, VT300, or VT310) with your computer by the USB cable and converter.



(2) Run 'ParaListV1.29.exe' and the following configuration window will be opened:



- (3) Select virtual com port and press 'Open'. In this example, it is COM3.
- (4) Press and hold the SOS button of the tracker and turn on the tracker, the tracker is then ready to be configured. Press 'Read All' button to read the current parameters.  
(Note: For VT300 and VT310, if there is no SOS button available, connect the white cable [Input1] and black cable [GND] directly to the device, the device will be then ready for configuration.)
- (5) Setting Instructions



### **Block 1 - Set GPRS function for the tracker**

- ✚ State: Tick State for GPRS setting.
- ✚ APN: Name of your APN provider.
- ✚ APN Name: Input the user name (if any).
- ✚ APN Pw: Input APN password (if any).
- ✚ TM: Input interval of sending GPRS packet
- ✚ ID: Set ID for the tracker, for example, '123'.
- ✚ IP: Set IP.
- ✚ Port: Set Port.
- ✚ TCP/UDP: Choose TCP or UDP for GPRS tracking.
- ✚ Press GPRS button to write all GPRS setting parameters to the tracker.
- ✚ Check if GPRS all parameters have been set by pressing Read All button to read the status.
- ✚ To effect these settings, you need to restart the tracker. (same for below settings)

### **Block 2 - Set alert of low battery and over speed and sleep mode**

- ✚ Low Bat: Set low battery alert.
- ✚ Speed: Set over speed alert.
- ✚ Area Alarm: Set geo-fencing alert.
- ✚ Sleep: Set sleep mode for power saving. 0: turn off sleep mode. 1: sleep mode. 2: deep sleep mode
- ✚ Other: Press Other to effect these settings

### **Block 3 - Set interval for SMS tracking and the phone number for monitor/wiretapping**

- ✚ Tel: Input a mobile phone number for receiving continuous automatic timed SMS location report.
- ✚ Time: Set interval for automatic timed reports
- ✚ SMS: Press SMS to effect this setting.
- ✚ Monitor: Set phone number for voice monitoring/wiretapping(listen only) for GT60 or VT310 and then press Set button to effect the setting.

### **Block 4 - Set password and set prefix country code**

- ✚ Password: Change password for SMS commands.
- ✚ TelStx: Be advised caution in this setting. Normally, your country code (for example in China, +86) will be automatically added to receiver's phone number when sending SMS. In this case, you should leave this column blank. In case the country code is not added you are required to input prefix country code here, for example, +86.

### **Block 5 - Set phone number for button(s)**

- ✚ SMS1/Tel1: Set phone number for receiving SMS or call when SOS button is pressed. Press Key1 to effect the setting.
- ✚ SMS2/Tel2: Set phone number for receiving SMS or call when B button (on GT30/GT60) is pressed. Press Key2 to effect the setting.
- ✚ SMS3/Tel3: Set phone number for receiving SMS or call when C button (on GT30/GT60) is

pressed. Press Key3 to effect the setting.

### **Block 6 - Set interval of logging, time zone, power saving mode, and SMS string**

- ✚ Record Time: Set interval for logging. Press Set to effect this setting.
- ✚ Time Zone: set time difference in minute to GMT (default time zone is GMT).  
For those ahead of GMT just input the time difference in minute. For example, 120.  
For those behind GMT, '-' is required. For example, -120. Press Set to effect this setting.
- ✚ Sensor Sleep: Set power saving mode when tracker is inactive. In power saving mode, GPS stops working and GSM enters standby mode. For example, if 10 is set, GT60/VT310 will enter power saving mode in 10 minutes after it is immobile.
- ✚ Key1 String: Set character for SOS alert message which will be sent to the number for SOS button.
- ✚ Key2 String: Set character for alert message which will be sent to the number for B button.
- ✚ Key3 String: Set character for alert message which will be sent to the number for C button.

### **Block 7 - Extended Settings**

Remarks: If the box is blank, its value is '0'; if the box is ticked, its value is '1'

- ✚ A=0, Close location report function when a call is made to the tracker
- ✚ A=1, Open location report function to get position SMS by calling the tracker
- ✚ B=0, Analyze position SMS format to be read easily.  
For example:  
Latitude = 22 32 36.63N Longitude = 114 04 57.37E, Speed = 2.6854Km/h,  
2008-12-24,01:50
- ✚ B=1, Location SMS format is in NMEA 0183 Format  
For example: \$GPRMC,072414.000,V,3114.3763,N,12131.3255,E,0.00,0.00,050805,\*00
- ✚ C=0, the tracker does NOT automatically hang up when one call incoming.
- ✚ C=1, the tracker hangs up after 4~5 rings of an incoming call
- ✚ D=0, the tracker does NOT send one SMS to SOS preset number when it is power on
- ✚ D=1, the tracker sends one SMS to SOS preset number when it is power on.
- ✚ F=0, the tracker does NOT send SMS to the SOS preset number when it enters/exits GPS blind area.
- ✚ F=1, the tracker sends alert SMS to the SOS preset number when it enters/exits GPS blind area.
- ✚ G=0, the LED light(s) in normal status when the tracker works
- ✚ G=1, the LED light(s) off when the tracker works

### **Block 8 - Other Buttons**

- ✚ Auto: when one tracker is configured and you need to apply same parameters to other trackers [for bulk configuration], you can then tick 'Auto' to make automatic configuration. After another tracker is connected with the USB cable, immediately it will be automatically configured.
- ✚ Write All: Press Write All button to write same settings to another tracker.
- ✚ Init All: Press Init All button to initialize all parameters of the tracker back to default setting. Restart device and press Read All button to check this setting is effective.